

# 65" Outdoor Freestanding Digital Posters



Stunning outdoor totems; perfect for any weather conditions

## Direct Sunlight Readable

Thanks to their commercial grade ultra-high brightness panels (2,500cd/m<sup>2</sup>), these displays are up to 10 times brighter than a domestic TV and so are easily readable even in direct sunlight.



2,500cd/m<sup>2</sup>

## Full Array Local Dimming Panel

Local Dimming delivers unparalleled image quality by dynamically adjusting brightness across the entire screen. Experience stunning contrast, deeper blacks, and vibrant highlights while dramatically reducing power consumption and heat output—enhancing both efficiency and panel longevity for uncompromising outdoor performance.



- 4K** 4K Resolution
- Weatherproof
- Advanced Temperature Control System
- Anti-Reflective Glass
- Ambient Light Sensor
- Protective UV Film
- Internal Locker
- Plug and Play
- 24/7 Usage
- Customisation Available

## Other Features

### Vandal Proof

With a 2mm thick mild steel enclosure and 5mm thermally-toughened glass front, these IK10 rated displays are designed to withstand damage that may occur in public spaces. To avoid tampering, controls and inputs are hidden and cannot be accessed by passers-by.

# IK10

Impact Resistance

10

Protected against 20 joules of impact



2mm Steel Enclosure  
5mm Tough Glass

### Easy Maintenance

These displays use hydraulic cylinders to allow easy front access to the internal components, ensuring that maintenance is simple and straightforward. This is also how you access the displays internal locker where there is space to fit a PC or media player if you wanted to run the screen from an external source.



Secure Internal Locker



### Weatherproof

Designed to withstand the elements, these displays are protected against all wet weather conditions and airborne dust particles by their robust IP65 rated enclosure. They also feature a waterproof coating on all internal circuit boards and waterproof over-moulded AV connectors.

# IP65

Dust Resistance

6

Protected against dust that may harm equipment.

Water Resistance

5

Protected against water spray from all directions.



### Advanced Temperature Control System

To maximise the lifespan of the display, the internal airflow system keeps the screen running at the optimal temperature regardless of the external conditions. Built-in air conditioning can be tailored to allow the display to work in any climate.



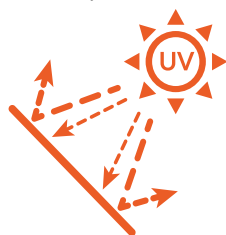
50°

-20°

Operating Temperature

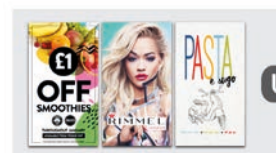
### Anti Reflective, UV-Protected Glass

The specially treated front glass diffuses direct sunlight for optimal visibility in bright conditions while an advanced UV coating reduces internal heat by up to 71%. This minimizes cooling requirements, enhances efficiency, and extends the display's lifespan.



### Plug and Play

Plug and Play is the most straightforward way to upload content to the screen. Simply load images and videos onto a USB, insert into the display, wait for your content to copy over and then remove. Your images and videos will now play in a continuous loop.



USB



### Optional Network Upgrade

For a small charge, you can upgrade your screen to be networked. This will allow you to connect your screen via Wi-Fi, LAN or 4G, and then remotely update it over the internet.



### Customisation Available

Bespoke displays can be manufactured to order should you require a non-standard solution, to incorporate a camera or touch screen upgrade for example. We can also modify existing models to add a 4G module for mobile connectivity or a vinyl logo/wrap.



4G



# Key Features



2,500 CD/M<sup>2</sup>  
SUNLIGHT READABLE



ENHANCED INDUSTRIAL-GRADE PAINT



IK10 RATED



ANTI-REFLECTIVE GLASS



2MM THICK  
STEEL ENCLOSURE



REMOVABLE BASE



PROTECTIVE UV FILM



ANDROID MEDIA PLAYER



WEATHERPROOF



AMBIENT LIGHT SENSOR



EASY MAINTENANCE



4G

CUSTOMISATION  
AVAILABLE



## Specification Table

		65 Inch
Panel	Resolution (px)	3840x2160
	Display Area (mm)	1428.5x803.5
	Aspect Ratio	16:9
	Brightness (cd/m <sup>2</sup> )	2,500
	Colour	1.07 B
	Viewing Angle	178°
	Contrast Ratio	1,400:1
	Dynamic Contrast Ratio	100,000:1
AV Inputs	Video	HDMI x2
Power	Power Consumption - Average (W)	550
	Input Voltage	AC110~240V (50Hz~60Hz)
Mechanical	Unit Size (HxWxD mm)	2235.3x1086x245
	Package Size (HxWxD mm)	2350x1350x410
	Footprint (WxD mm)	1116x550
	Net Weight (kg)	260
	Gross Weight (kg)	340
	IK Rating	IK10
Environmental	Operating Temperature:	-20 °C to 50 °C
	Operating Humidity:	10% - 80%
	Storage Temperature:	-30°C - 60°C
	Storage Humidity:	5% - 90%
	Enclosure Protection	IP65
Computer	Media Formats	Video (MPG, AVI, MP4, RM, RMVB, TS), Audio (MP3, WMA), Image (JPG, GIF, BMP, PNG)
	Media Resolution	3840x2160/2160x3840
	Internal Storage	32GB
	CPU	Rockchip RK3399 @1.8GHz
	GPU	Mali-T860 MP4 @600MHz
	RAM	4GB DDR3
	USB	USB2.0 HOST (x2), USB3.0 HOST (x2)
	LAN	10/100Mb/s Ethernet
	Wi-Fi	802.11b/g/n/ac
	OS	Android 10
Accessories	Graphic Engine	OpenGL ES 1.1/2.0/3.0/3.1, OpenCL 1.1, Renderscript, Direct3D 11.1
	Included	AC Power Cable, Remote Control
Warranty	Optional	Touch Screen Upgrade, Network Upgrade, Camera
	Warranty Period	3 Year Warranty
	Technical Support	Lifetime

Errors and omissions excepted



# Technical Drawing

